

WEKEM®

SA

ENTER

WEKEM®

Professional
industrial products



Innovative products, comprehensive product range, excellent reliability, production planning to meet time schedules, tailor made customer solutions, are part of our standard operation.



automatic labeling

Quality is the basis of modern development. In a fast growing and highly developed industrial environment, modern materials are required - we are living up to this challenge!

Our chemical-technical products are constantly improved. Formulas are constantly optimised, taking into consideration the factors health and environment.



optical control

Take profit from our experience – as so many of our satisfied customers worldwide do already

WEKEM®

Your partner for

- Professional industrial products
- Technical aerosols
- Maintenance
- Cleaning
- Assembly pastes
- Adhesives and sealants
- Auxiliary equipment



delivery in time

Our market focused solutions and excellent reliability are the foundation of a partnership.

AEROSOLS

WEKEM Aerosols are high quality innovative technical sprays. Well tested and applied formulations are the basis of these top of the range products. They are used in applications in industry, maintenance/service, automotive, handicraft etc. They are efficient, help to reduce costs, wear and tear and are perfectly tailored for your operational processes.



improve optical appearance



protect connectors from corrosion



maintenance



production & electronics



uninterrupted production



assembly



WS 36 RUST REMOVER

WS 36 penetrates seized-up and rusted connections easily and quickly. Can be used for all screws and threads, bolts, joints and hinges etc. – High capillary effect by new active agent formula. The ideal product for maintenance in industry, trade and DIY. Eliminates humidity, protects all metal surfaces, facilitates assembly and dismantling. Avoids corrosion and squeaking noises.



Container type:
Aerosol 400 ml

Item no.: WS 36-400 · PU: 12 pc

Item no.: WS 36-400 · Content: 400 ml · PU: 12 pc



WS 38 RUST REMOVER SPECIAL

WS 38 was developed for extremely seized-up and corroded connections. Finest MoS₂ particles and synthetic agents solve the rust and allows for simple dismantling. The high capillary effect makes this product a must for repairs and maintenance.

WS 38 penetrates severely quickly, eliminates humidity and protects against corrosion.

Also available as bulk product!



Container type:
Aerosol 400 ml

Item no.: WS 38-400 · PU: 12 pc

Item no.: WS 38-400 · Content: 400 ml · PU: 12 pc



WS 40 UNIVERSAL SPRAY

WS 40 lubricates hinges, connections, wheels, rollers, handles, locks on windows and doors, springs, leaf springs etc. WS 40 is corrosion protection, rust remover, lubricant and cleaning agent all in one. Eliminates humidity (e.g. on electrical contacts, ignition systems, motors and electrical tools, bicycles, small engines etc.). Cleans, preserves and protects all in one go. Penetrates grease, dirt and offers corrosion protection



Container type:
Aerosol 400 ml

Item no.: WS 40-400 · PU: 12 pc

Item no.: WS 40-400 · Content: 400 ml · PU: 12 pc



Container type:
Aerosol 400 ml

Item no.: WS 44-400 · PU: 12 pc

WS 44 ELECTRONIC SPRAY

WS 44 was developed especially for electrical components. Cleans and protects electrical contacts and metal parts. Eliminates humidity on the electrical components and protects the connectors against corrosion and oxidation.

Item no.: WS 44-400 · Content: 400 ml · PU: 12 pc



Container type:
Aerosol 400 ml

Item no.: WS 66-400 · PU: 12 pc

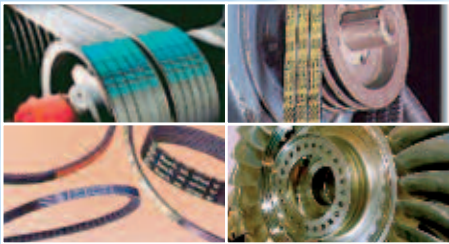
WS 66 RUST CONVERTING PRIMER

Rust-converting elastic 1-component primer for special bonded over-lacquering. For steel, aluminium and zinc coatings, corrugated iron, concrete and eternit. Can be painted or spray painted, is extremely weather-resistant, also resistant to heat, seawater, oil and gasoline.

1 product – 3 functions:
rust transformer, filler and primer

Colour: rust-brown.

Item no.: WS 66-400 · Content: 400 ml · PU: 12 pc



Container type:
Aerosol 400 ml

Item no.: WS 68-400 · PU: 12 pc.

WS 68 BELT DRESSING

WS 68 is a highly efficient spray for V-belts and flat belts. It preserves, protects and conserves all in one go. Belt slipping is stopped increasing the effectiveness. Prevents drying and aging of the V-belt and reduces the risk of V-belt ruptures

Item no.: WS 68-400 · Content: 400 ml · PU: 12 pc



Container type:
Aerosol 400 ml

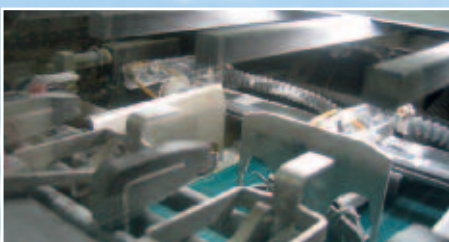
Item no.: WS 70-400 · PU: 12 pc

WS 70 DRILLING AND CUTTING OIL

WS 70 is a neat drilling and cutting oil, formulated from synthetic oils, with excellent cutting performance. Extends tool life, reduces tool breakages and enhances the surface finish of the work piece.

Also available as bulk product!

Item no.: WS 70-400 · Content: 400 ml · PU: 12 pc



Container type:
Aerosol 400 ml

Item no.: WS 72-400 · PU: 12 pc

WS 72 DRY PTFE LUBRICANT

Widely applicable as lubricant (grease-free) and as a release agent e.g. for slides and moulds in the plastic industry. Adheres to glass, rubber, wood, plastic and metal. Temperature range from -180 °C up to +260 °C. Water-resistant and prevents corrosion. Ideal to eliminate squeaking. Reduces friction, wear and tear and prevents dust formation. Especially suited as release agent due to its anti-stick properties, coating of seals, O-rings, for lubrication and as anti-stick agents. Suitable because it does not stain for the paper and wood processing industry.

Item no.: WS 72-400 · Content: 400 ml · PU: 12 pc



 **Container type:**
Aerosol 400 ml

Item no.: WS 74-400 · PU: 12 pc

WS 74 SILICONE SPRAY

Lubricant, release agent and care product in one. Excellent as lubricant for seat tracks, sun roofs, sliding windows, roller rails, wheels and rollers. Suitable as mould release agent in the plastic blow moulding industry as well as the vacuum moulding industry. Can be used as protection on metals, plastics, leather, rubber and chrome. Displaces humidity in electrical equipment, prevents electrostatic charging and corrosion.

Item no.: WS 74-400 · Content: 400 ml · PU: 12 pc



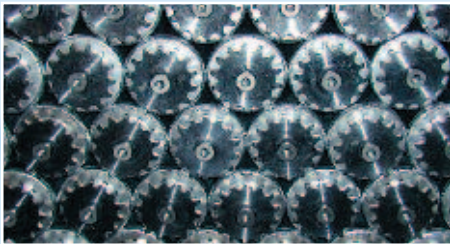
 **Container type:**
Aerosol 400 ml

Item no.: WS 78-400 · PU: 12 pc

WS 78 SPRAY GLUE

Spray applied adhesive. Especially appropriate for glueing materials such as cardboard, wood, cork, leather, textiles, felt, rubber, plastic, hard foam. As well as for glueing onto glass, ceramic and metal. Join the parts together, fitting them precisely, press them together briefly and firmly.

Item no.: WS 78-400 · Content: 400 ml · PU: 12 pc



 **Container type:**
Aerosol 400 ml

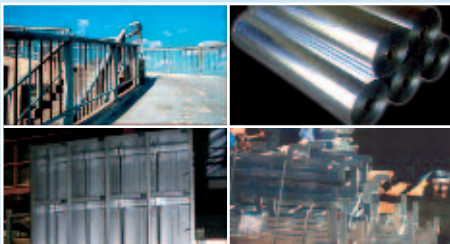
Item no.: WS 80-400 · PU: 12 pc


WS 80 ZINC REPAIR SPRAY

WS 80 is an aluminium paint to repair and optically adapt damaged spots and welded seams on zinc-coated parts. Dries quickly, bonds strongly onto the substrate and is weather proof.

Colour: aluminium high gloss

Item no.: WS 80-400 · Content: 400 ml · PU: 12 pc



 **Container type:**
Aerosol 400 ml

Item no.: WS 81-400 · PU: 12 pc

WS 81 ZINC ALU MIX

WS 81 is used to repair damaged zinc coatings or to coat drilled and welded areas. Protects all metal surfaces permanently against rust, corrosion and oxidation. WS 81 is the ideal corrosion protection for car bodywork, spot-welding in ventilation and air conditioning systems and on steel constructions. Can be used any time and is very economical. One coating has a film thickness of about 20-30 µm.

Item no.: WS 81-400 · Content: 400 ml · PU: 12 pc



 **Container type:**
Aerosol 400 ml

Item no.: WS 82-400 · PU: 12 pc

WS 82 ALU SPRAY

WS 82 is a corrosion protection for exhaust systems, aluminium components, galvanised surfaces, damaged zinc-coatings, for coating metals and as surface finishing.

Item no.: WS 82-400 · Content: 400 ml · PU: 12 pc



Container type:
Aerosol 400 ml

Item no.: WS 83-400 · PU: 12 pc

WS 83 CHROME ALU SPRAY

High-quality aluminium coating for all metal surfaces that need a shining chrome effect. Heat resistant up to 800°C. Dries quickly.

Item no.: WS 83-400 · Content: 400 ml · PU: 12 pc



Container type:
Aerosol 400 ml

Item no.: WS 84-400 · PU: 12 pc

WS 84 COPPER SPRAY

WS 84 is the ideal aid in many professional and DIY applications. It is an excellent protection against weather, for subsequent refitting of copper-coated parts such as gutters, pipes etc. Good adhesion on nearly all metals, glass and plastics.

Item no.: WS 84-400 · Content: 400 ml · PU: 12 pc



Container type:
Aerosol 400 ml

Item no.: WS 85-400 · PU: 12 pc

WS 85 ZINC PRIMER

WS 85 is a long-term rust preventative consisting of 90% pure zinc in the finished dried coating. Electrically conductive, therefore also appropriate as spot-welding paint. For refitting and optical improvement of damaged spots and welded seams. Strong adherence. Dries quickly. Resistant against salt, rust and water. Temperature resistant up to +500 °C, can be lacquered over.

Also available as bulk product for application by brush!

Item no.: WS 85-400 · Content: 400 ml · PU: 12 pc



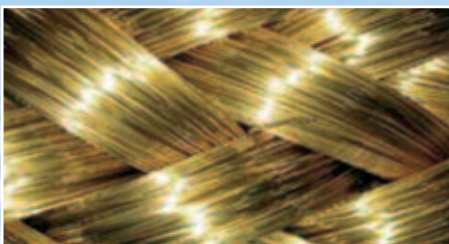
Container type:
Aerosol 400 ml

Item no.: WS 86-400 · PU: 12 pc

WS 86 STAINLESS STEEL PAINT

For optical improvement of metal parts, for the protection against corrosion, for refitting of damaged stainless steel parts, lorry-superstructures, silos, piping etc. – Safe adhesion on all metal parts and metal constructions, glass, most plastic materials, wood, stone and cardboard. Heat-resistant up to 300°C for short periods.

Item no.: WS 86-400 · Content: 400 ml · PU: 12 pc



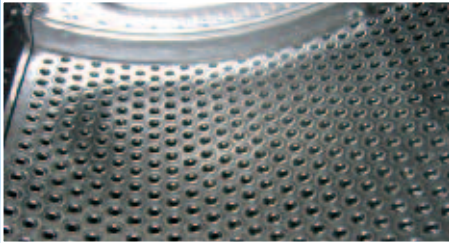
Container type:
Aerosol 400 ml

Item no.: WS 87-400 · PU: 12 pc

WS 87 YELLOW BRASS SPRAY

WS 87 is the ideal aid in many trades and DIY areas. Excellent as a protection against weather influences, for subsequent refitting of yellow chromed parts and for decorating purposes. Good adhesion on nearly all materials such as metal, glass, wood and plastic.

Item no.: WS 87-400 · Content: 400 ml · PU: 12 pc



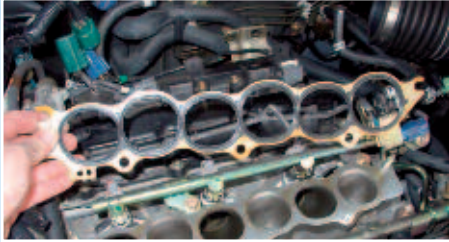
 **Container type:**
Aerosol 400 ml

Item no.: WS 88-400 · PU: 12 pc

WS 88 STAINLESS STEEL CLEANER

WS 88 contains highly effective stainless steel care products for streak-free cleaning of all stainless steel and chrome surfaces. Removes and reduces fingerprints, greasy films and makes the surface look like new. Leaves a long-lasting protective film that allows water to run off. Prevents new adhesion of dirt. Meets all cleaning requirements of DAB 10 and the European pharmacopoeia.

Item no.: WS 88-400 · Content: 400 ml · PU: 12 pc



 **Container type:**
Aerosol 400 ml

Item no.: WS 90-400 · PU: 12 pc

WS 90 GLUE AND PAINT STRIPPER

WS 90 solves and removes residue of sealants quickly and easily as well as it removes hardened adhesive residue, paints and lacquers. Ideal as paint stripper. Solves residue of oil, resin, grease and tar. WEKEM glue and paint stripper can be applied on metal, glass, wood, ceramic, stone and many other materials. For sensitive surfaces, please test on concealed area first.

Item no.: WS 90-400 · Content: 400 ml · PU: 12 pc



 **Container type:**
Aerosol 400 ml

Item no.: WS 92-400 · PU: 12 pc

WS 92 MULTINOX STAINLESS STEEL POLISH

WS 92 is a special high-efficiency care product for metal, lacquers and plastic. Chrome and stainless steel surfaces will shine brightly again. MULTINOX is fingerprint and humidity repellent. Due to the modern active agents incorporated in the product, a protective film is formed that gives a long-term sealing effect.

Item no.: WS 92-400 · Content: 400 ml · PU: 12 pc



 **Container type:**
Aerosol 400 ml

Item no.: WS 130-400 · PU: 12 pc


WS 130 LEAK DETECTOR

Leak detector for all kinds of compressed gas, heating gas and compressed air systems. Quickly and reliably detects leaks in brake and pipe lines, valves, fittings, soldered and welded connections, screwed connections etc. – Put line under pressure and apply the product from a distance of about 30 cm. Bubble formation makes every leak visible.

Also available as bulk product!

Item no.: WS 130-400 · Content: 400 ml · PU: 12 pc



 **Container type:**
Aerosol 400 ml

Item no.: WS 167-400 · PU: 12 pc

WS 167 CHAIN GUARD

Perfectly able to withstand stress and reduce wear and tear on all kinds of slow and fast running chains and wire cables. Sticky, no throw off during quick rotation. High creep capacity and penetrating ability in chain joints, bolts, cables, bearings etc. – Decreases the actuation power by reducing friction. Protecting against corrosion in humid, aggressive atmospheres. Transparent, colourless lubricating film. Compatible with the usual sealing materials, impregnating media, mineral oils. Very economical in use by high functional safety and safe long-term lubrication.

Item no.: WS 167-400 · Content: 400 ml · PU: 12 pc



Container type:
Aerosol 400 ml

Item no.: WS 267-400 · PU: 12 pc

WS 267 WHITE GREASE WITH PTFE

Long-term highly efficient lubrication for all moving parts, sliding parts and friction surfaces. A strongly adhering lubricant for chains, gear wheels, hinges, ball bearings and also suitable as a mould release agent. The white grease forms an extremely resilient, water-resistant lubricating film. Corrosion protection additives reduce rust formation and therefore friction and wear and tear. Even in extreme conditions and increased temperatures it offers excellent wear and tear protection due to PTFE.

Item no.: WS 267-400 · Content: 400 ml · PU: 12 pc



Container type:
Aerosol 150 ml

Item no.: WS 288-150 · PU: 12 pc

WS 288 NANO STEEL

WS 288 is a new combination of agents from nanotechnology. Ideal for outdoor use and in the automotive sector. Nano-steel seals the surface with the smallest ceramic particles. The setting lotus effect offers long-term protection against weather influences, dust, dirt etc. WS 288 is particularly suitable for all outdoor metal surfaces. Ideal on vehicles, e.g. wheel rims, sprockets, shock absorbers, profiles etc., on machines, in window construction, in steel girders, actuators, ship parts and parts exposed to special pollution.

Item no.: WS 288-150 · Content: 150 ml · PU: 12 pc



Container type:
Aerosol 400 ml

Item no.: WS 300-400 · PU: 12 pc

WS 300 COOLING AGENT SPRAY

Quick acting product to freeze and shrink metals. For error detection during thermal disruptions. Avoids damage caused by heat during soldering. Highly efficient and economical in use.

Item no.: WS 300-400 · Content: 400 ml · PU: 12 pc



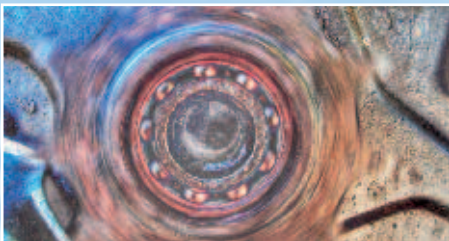
Container type:
Aerosol 400 ml

Item no.: WS 320-400 · PU: 12 pc

WS 320 ANTI-SPATTER SPRAY

Prevents the sticking of welding spatters. Protects nozzles and work pieces from damage by welding spatters. Does not have any negative effect on subsequent lacquering work. Silicone free.

Item no.: WS 320-400 · Content: 400 ml · PU: 12 pc



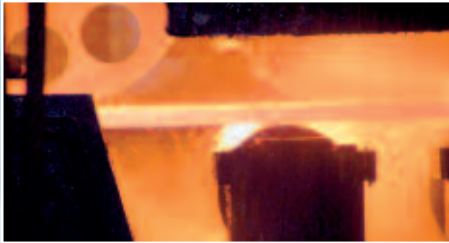
Container type:
Aerosol 400 ml

Item no.: WS 367-400 · PU: 12 pc

WS 367 HIGH PRESSURE LUBRICANT

WS 367 is resistant against high pressures and prevents wear and tear. Strong adherence, does not drip in quick rotation. Excellent penetrating ability in chain joints, bolts, cables, bearings etc. – Decreases the actuation power by reducing friction. Protecting against corrosion in humid, aggressive atmospheres. Very economical in use as a result of proper functionality and gives long-term lubrication.

Item no.: WS 367-400 · Content: 400 ml · PU: 12 pc



Container type:
Aerosol 400 ml

Item no.: WS 400-400 · PU: 12 pc

WS 400 ANTI-SEIZE METAL GLIDE

WS 400 is a highly efficient lubricant and corrosion protection product against seizure, wear and tear and scaling. Ideal in high temperatures and wet areas. Applicable on sliding bars, plug connectors, bolts, screws, flanges etc. – Protects even in aggressive media. Extremely resistant against ruptures and excellent adherence. Long-term protection. Temperature range: -180° C up to +1200 °C.

Also available as a paste!

Item no.: WS 400-400 · Content: 400 ml · PU: 12 pc



Container type:
Aerosol 400 ml

Item no.: WS 430-400 · PU: 12 pc

WS 430 MOTOR PROTECTION COATING

WS 430 is a temperature-resistant protective lacquer for all engines. Application areas for the product are: distributor, battery, cables and engine compartment.

Item no.: WS 430-400 · Content: 400 ml · PU: 12 pc



Container type:
Aerosol 400 ml

Item no.: WS 440-400 · PU: 12 pc

WS 440 ANTI-CORROSION WAX

Protects all metals and unlacquered parts against rust, water, dirt, road salt etc. – The ideal protective film for the conservation of tools and precision parts. Chemical-resistant, offers long-term protection.

Item no.: WS 440-400 · Content: 400 ml · PU: 12 pc



Container type:
Aerosol 300 ml

Item no.: WS 467-300 · PU: 12 pc

WS 467 BATTERY TERMINAL PROTECTION

WS 467 protects the contacts of all electrical parts in the automotive industry. Highly viscous formula. Ideal for vehicle batteries (cars, lorries, farm machinery, naval machinery).

Item no.: WS 467-300 · Content: 300 ml · PU: 12 pc



Container type:
Aerosol 400 ml

Item no.: WS 500-400 · PU: 12 pc

WS 500 PRIMER GREY

Rust protection primer and filler for lacquers and paints. Ideal as primer coating. Applicable as base lacquer for all further lacquering processes. Dries quickly.

Item no.: WS 500-400 · Content: 400 ml · PU: 12 pc



Container type:
Aerosol 400 ml

Item no.: WS 510-400 · PU: 12 pc

WS 510 FORKLIFT PAINT ORANGE

WS 510 dries quickly, resistant to light and weatherproof. For lacquer repairs on forklifts and warehouse equipment.

Colour: blood orange

Item no.: WS 510-400 · Content: 400 ml · PU: 12 pc



Container type:
Aerosol 400 ml

Item no.: WS 511-400 · PU: 12 pc

WS 511 FORKLIFT PAINT CARBON GREY

WS 511 dries quickly, resistant to light and weatherproof. For lacquer repairs on forklifts and warehouse equipment.

Colour: colour carbon grey

Item no.: WS 511-400 · Content: 400 ml · PU: 12 pc



Container type:
Aerosol 400 ml

Item no.: WS 520-400 · PU: 12 pc

WS 520 HIGH TEMPERATURE BLACK

WS 520 is applicable on exhausts, engines, exhaust pipes etc. Dries quickly.

Temperatures: max. + 600°C.

Colour: black

Item no.: WS 520-400 · Content: 400 ml · PU: 12 pc



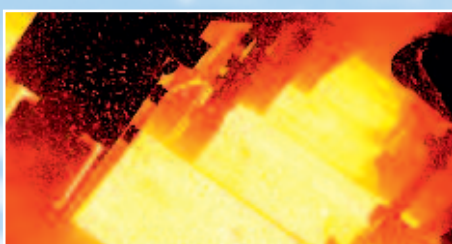
Container type:
Aerosol 400 ml

Item no.: WS 530-400 · PU: 12 pc

WS 530 BLACK RALLYE DECO PAINT

WS 530 acrylic lacquer for applying decorative striping and decorations. Weatherproof and dries quickly. Ideal for sports cars with decorative striping.

Item no.: WS 530-400 · Content: 400 ml · PU: 12 pc



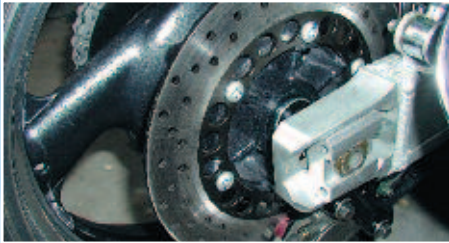
Container type:
Aerosol 400 ml

Item no.: WS 600-400 · PU: 12 pc

WS 600 HTC CERAMIC LUBE

WS 600 is a metal-free special lubricant – resistant to high temperatures and pressure. Ideal as separating agent for temperature-exposed threaded connections of stainless and high alloy steel. With special long-term protection, prevents baking, seizure and protects against corrosion. Temperature range upto 1400° C.

Item no.: WS 600-400 · Content: 400 ml · PU: 12 pc



 **Container type:**
Aerosol 500 ml

Item no.: WS 1000-500 · PU: 12 pc

WS 1000 BRAKE CLEANER

Special product to be used on engines, brakes, actuators and gears. The ideal aid for assembly and repair. Micro-active and residue-free, quick evaporation. WS 1000 removes oil, grease, dust, metal residue and remains of gear and brake pads without residue.

Also available as bulk product!

Item no.: WS 1000-500 · Content: 500 ml · PU: 12 pc



 **Container type:**
Aerosol 500 ml

Item no.: WS 1200-500 · PU: 12 pc

WS 1200 BURNER CLEANER

Cleans and removes soot and grease from burners without leaving any residue. Ideal for cleaning and maintenance, reduces consumption and energy costs.

Item no.: WS 1200-500 · Content: 500 ml · PU: 12 pc



 **Container type:**
Aerosol 500 ml

Item no.: WS 2000-500 · PU: 12 pc

WS 2000 PROFI CLEANER


For professional use in industry and assembly. Removes grease, oil, dirt, soot etc. pore-deep. – Ideal for the preparation of surfaces prior to applying adhesives. Quick residue-free evaporation due to the active formula.

CFE-free.

Also available as bulk product!

Item no.: WS 2000-500 · Content: 500 ml · PU: 12 pc



 **Container type:**
Aerosol 500 ml

Item no.: WS 2400-500 · PU: 12 pc

WS 2400 PROFI CLEANER LEMON

WS 2400 is for professional use in industry and assembly. Removes grease, oil, dirt, soot etc. pore-deep. – ideal for cleaning of surfaces prior to applying adhesives. Quick residue-free evaporation.

Item no.: WS 2400-500 · Content: 500 ml · PU: 12 pc



 **Container type:**
Aerosol 400 ml

Item no.: WS 3000-400 · PU: 12 pc

WS 3000 FOAM CLEANER

Removes dust, grease, nicotine layers, insects etc. easily - WS 3000 for quick and gentle cleaning of glass, metals, fittings, plastic, carpets, monitors, housings and more. Does not affect surfaces. Anti-static additive protects against repeated pollution.

Item no.: WS 3000-400 · Content: 400 ml · PU: 12 pc




**Container type:**
Aerosol 400 ml
Item no.: WS 3100-400 · PU: 12 pc

WS 3100 PRESSURIZED AIR SPRAY

WS-3100 easily removes dust and loose dirt, also from not easily accessible parts. Sensitive surfaces can be cleaned without contact.

Item no.: WS 3100-400 · Content: 400 ml · PU: 12 pc



**Container type:**
Tub 500 ml
Tub 750 ml
Item no.: WS 3200 · PU: 12 pc

WS 3200 1-C PU FOAM

Universal, highly economical 1-component PU foam. Excellent adhesion to practically any ordinary construction material, even on humid surfaces. Fills hollow spaces down to the smallest corner, is extremely noise and heat absorbent, wind and air tight. Water-resistant and resistant against decay.

For window construction, door mounting, frames, for glueing, attaching and sealing inside and outside.

Item no.: WS 3200-500 · Content: 500 ml · PU: 12 pc

Item no.: WS 3200-750 · Content: 750 ml · PU: 12 pc

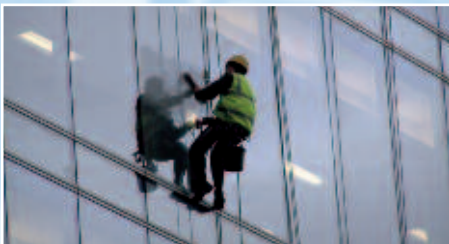



**Container type:**
Aerosol 150 ml
Item no.: WS 3500-150 · PU: 12 pc

WS 3500 EASY CLEAN

WS 3500 is the mobile hand wash for travelling and at work. Cleans, cares and protects all in one go. Easy, no water required. Easy-Clean solves and cleans pollutions of all kinds such as oil, grease, soot, dust etc.

Item no.: WS 3500-150 · Content: 150 ml · PU: 12 pc



**Container type:**
Aerosol 400 ml
Item no.: WS 3600-400 · PU: 12 pc

WS 3600 GLASS CLEANER

Reliably cleans all glass and plastic surfaces such as car windows and headlights, glass tables etc. Extremely suitable for cleaning mirrors

Also available as bulk product!

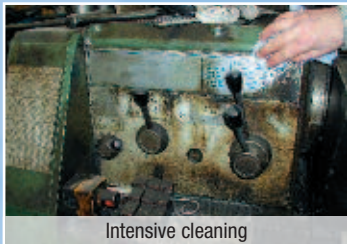
Item no.: WS 3600-400 · Content: 400 ml · PU: 12 pc

DO YOU MISS A PRODUCT IN OUR RANGE?

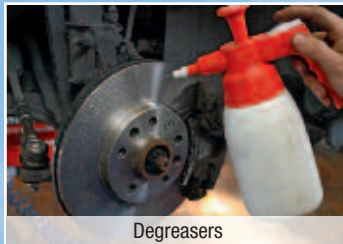
As there are a huge number of modern chemicals in use in many technical applications we have devised a very unique service. Together with you we can reformulate any of our products to meet your exacting demands relating to application and environment. Additionally we offer tailor made product development, especially product modifications as well as special product formulations.

PRODUCTS IN CONTAINERS/BULK

Especially for today's operational processes, WEKEM provides the required product in both small and large pack sizes. Developed as an environmentally-friendly product, perfectly made to measure for all your applications. Services in all fields of modern workshop technology. Easy, safe, quick.



Intensive cleaning



Degreasers



for lubrication



For welding



drilling and cutting



industrial cleaning



Container type:
Canister 5 l

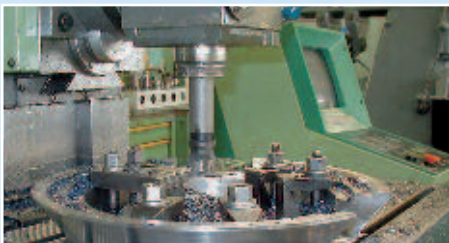
Item no.: WS 38-5 · PU: 1 pc

WS 38 RUST REMOVER SPECIAL

WS 38 was developed especially for extremely seized and rusted connections. The finest MoS₂ particles and active synthetic agents solve rust and allow for easy dismantling. The high capillary effect makes this product a must for repair and maintenance workshops.

WS 38 penetrates into the material extremely quickly, eliminates humidity and protects against corrosion.

Item no.: WS 38-5 · Content: 5 l · PU: 1 pc



Container type:
Canister 5 / 10 l

Item no.: WS 70 · PU: 1 pc

WS 70 DRILLING AND CUTTING OIL

WS 70 is a neat drilling and cutting oil, formulated from synthetic oils, with excellent cutting performance. Extends tool life, reduces tool breakages and enhances the surface finish of the work piece.

Also available as a spray!

Item no.: WS 70-5 · Content: 5 l · PU: 1 pc
Item no.: WS 70-10 · Content: 10 l · PU: 1 pc



Container type:
Tub 800g

Item no.: WS 85-800 · PU: 6 pc

WS 85 ZINC PRIMER

WS 85 is a long-term rust preventative consisting of 90% pure zinc in the finished dried coating. Electrically conductive, therefore also appropriate as spot-welding paint. For refitting and optical improvement of damaged spots and welded seams. Strong adherence. Dries quickly. Resistant against salt, rust and water. Temperature resistant up to +500 C°, can be lacquered over.

Also available as spray!

Item no.: WS 85-800 · Content: 800 g · PU: 6 pc



 **Container type:**
Canister 5/10 l
Item no.: WS 130 · PU: 1 pc

WS 130 LEAK DETECTOR

Leak detector fluid for all kinds of compressed gas, heating gas and compressed air systems. Quickly and reliably detects leaks in brake and pipe lines, valves, fittings, soldered and welded connections, screwed connections etc. – Put line under pressure and apply the product by brush. Bubble formation makes every leak visible.

Also available as spray!

Item no.: WS 130-5 · Content: 5 l · PU: 1 pc
Item no.: WS 130-10 · Content: 10 l · PU: 1 pc



 **Container type:**
Canister 5/10 l
Pail 30 l
Item no.: WS 1000 · PU: 1 pc

WS 1000 BRAKE CLEANER

Special product to be used on engines, brakes, actuators and gears. The ideal aid for assembly and repair. Micro-active and residue-free, quick evaporation. WS 1000 removes oil, grease, dust, metal residue and remains of gear and brake pads without residue.

Also available as spray!

Item no.: WS 1000-5 · Content: 5 l · PU: 1 pc
Item no.: WS 1000-10 · Content: 10 l · PU: 1 pc
Item no.: WS 1000-30 · Content: 30 l · PU: 1 pc



 **Container type:**
Canister 5/10 l
Pail 30 l
Item no.: WS 2000 · PU: 1 pc

WS 2000 PROFI CLEANER

For professional use in industry and assembly. Removes grease, oil, dirt, soot etc. pore-deep. – Ideal for the preparation of surfaces prior to applying adhesives.. Quick residue-free evaporation due to the active formula.

Also available as spray!

Item no.: WS 2000-5 · Content: 5 l · PU: 1 pc
Item no.: WS 2000-10 · Content: 10 l · PU: 1 pc
Item no.: WS 2000-30 · Content: 30 l · PU: 1 pc



 **Container type:**
Canister 5/10 l
Pail 30 l
Item no.: WS 2200 · PU: 1 pc

WS 2200 CLEANER

WS 2200, the special cleaner to degrease and prepare all assembly work in trade and industry. Ideal as pre-treatment for surfaces To be lacquered. Even suitable to remove the most persevering dirt.

Item no.: WS 2200-5 · Content: 5 l · PU: 1 pc
Item no.: WS 2200-10 · Content: 10 l · PU: 1 pc
Item no.: WS 2200-30 · Content: 30 l · PU: 1 pc



 **Container type:**
Canister 5/10/30 l
Item no.: WS 2500 · PU: 1 pc

WS 2500 GARAGE AND MACHINERY CLEANER

The economical power cleaner with a broad spectrum of applications. Particular combination of agents to remove oil and grease from all alkali-resistant surfaces and floors. For thorough cleaning of workshops, machines, machine parts, production and manufacturing buildings etc. Cleans and protects plastic, metal, bricks, rubber, PVC and industrial flooring after a short reaction time. WS 2500 can be used in high-pressure cleaning devices and for cleaning with automatic cleaners. RK listed.

Item no.: WS 2500-5 · Content: 5 l · PU: 1 pc
Item no.: WS 2500-10 · Content: 10 l · PU: 1 pc
Item no.: WS 2500-30 · Content: 30 l · PU: 1 pc



Container type:
Canister 10 l

Item no.: WS 2800-10 · PU: 1 pc

WS 2800 OIL NEUTRALIZER

The economical power cleaner for industrial use and for de-greasing in the municipal sector (builder's yards, road maintenance offices, fire brigades etc). Contains a particular formula to remove oil and grease from all alkaline-resistant surfaces and floor surfacing.

Economical in use, highly concentrated.

Item no.: WS 2800-10 · Content: 10 l · PU: 1 pc



Container type:
Canister 5 / 10 l

Item no.: WS 2600 · PU: 1 pc

WS 2600 PAVING AND DECKING CLEANER

Widely applicable concentrated cleaner to remove moss and weather residue from decking and paving. Very economical and quickly effective. In most cases, one application is sufficient. Protects against new growth owing to its long-term formula. High mixing ratio.

Item no.: WS 2600-5 · Content: 5 l · PU: 1 pc

Item no.: WS 2600-10 · Content: 10 l · PU: 1 pc



Container type:
Canister 1000 ml
Canister 5/10 l

Item no.: WS 2900 · PU: 10/1/1 pc

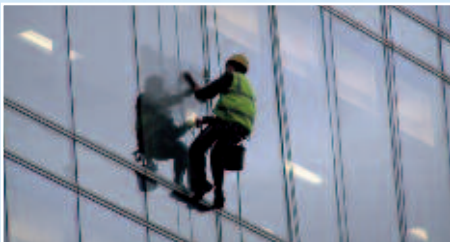
WS 2900 GASTRONOMY CLEANER

WS 2900 is especially effective against grease, oil and rust For the cleaning of floors, walls, ceiling and work surfaces, cookers, extractor hoods and fans, smoke ovens etc. and all alkaline-resistant objects and surfaces. WS 2900 was tested and admitted for the use in food areas and is environmentally friendly. Bio-degradable in accordance with the German detergents law. Suitable for the use in high-pressure cleaners.

Item no.: WS 2900-1000 · Content: 1000 ml · PU: 10 pc

Item no.: WS 2900-5 · Content: 5 l · PU: 1 pc

Item no.: WS 2900-10 · Content: 10 l · PU: 1 pc



Container type:
Canister 10 l

Item no.: WS 3600-10 · PU: 1 pc

WS 3600 GLASS CLEANER

WS 3600 is the professional glass cleaner for all glass surfaces. High polishing effect, short drying time. Protects from repeated pollution. Ideal also for mirrors.

Also available as spray!

Item no.: WS 3600-10 · Content: 10 l · PU: 1 pc



Container type:
Canister 10 l

Item no.: WS 3700-10 · PU: 1 pc

WS 3700 PLASTIC CLEANER

WS 3700 is a new formula that cleans and protects plastic and plastic surfaces.

Item no.: WS 3700-10 · Content: 10 l · PU: 1 pc

ASSEMBLY PASTES

WEKEM assembly pastes protect against wear and tear, corrosion, seizing-up, pitting and galvanising. Ideal for bolt guides, screw and flange connections. Depending on the application, various compounds are available. Extremely resistant in high temperatures and aggressive media.



Corrosion protection



long-term lubrication



reduction of friction



High-tech lubricant



high-temperature protection



anti-seize



Container type:
brush in lid tub / tub
500/1000 g
Item no.: WS 400 · PU 12/6 pc

WS 400 METAL-GLIDE

WS 400 is a highly efficient lubricant and corrosion protection product against seizure, wear and tear and scaling. Ideal in high temperatures and wet areas. Applicable on sliding bars, plug connectors, bolts, screws, flanges etc. Protects even in aggressive media. Extremely resistant to ruptures and excellent adherence. Long-term protection. Temperature range: -180° C up to +1200 °C.

Also available as spray!

Item no.: WS 400-500 · Content: 500 g · PU: 12 pc (brush in lid)
Item no.: WS 400-1000 · Content: 1000 g · PU: 6 pc (Tub)



Container type:
Tube
Item no.: WS 600-30 · PU 10 pc

WS 600 HTC CERAMIC LUBE

WS 600 is a white metal-free special lubricant on a ceramic base, resistant against high temperatures and pressure. Ideal as separating agent for temperature-exposed threaded connections of stainless and high alloy steel. With special long-term protection, prevents baking, seizure and protects against corrosion. Special tube for minimum consumption. An all-round product for high temperatures (up to 1400°C). A modern high-end agent. Optimum dosage via tube needle. Perfect for turret plates and extremely fine threaded connections.

Item no.: WS 600-030 · Content: 30 g · PU: 10 pc



Container type:
Pressurized pack
Item no.: WS 600-200 · PU 12 pc

WS 600 HTC PRESSURIZED PACK

WS 600 is a white metal-free special lubricant On a ceramic base, resistant against high temperatures and pressure. Ideal as separating agent for temperature-exposed threaded connections of stainless and high alloy steel. With special long-term protection, prevents baking, seizure and protects against corrosion. Special tube for minimum consumption. An all-round product for high temperatures (up to 1400°C). A modern high-end agent which is a must have in every workshop.

Approved by Tox-no. 180514
Item no.: WS 600-200 · Content: 200 ml · PU: 12 pc



Container type:
Pressurized pack-Set

Item no.: WS 600-200S · PU 1 pc

WS 600 HTC SET

Specifications see WS 600 pressurized pack.

Complete product and dosage set with various dosing attachments. Set comes with: blue angular dispenser, angular dispenser 6 mm, metal attachment brush. Using this set makes it possible to apply the required quantity of the product.

Approved by  Tox-no. 180514
Item no.: WS 600-200S · PU 1 pc



Container type:
Pinseltub 500ml
Weithalstüb 1000ml

Item no.: WS 600 · PU 12/6 pc

WS 600 HTC CERAMIC PASTE

White metal-free paste for lubrication of sliding surfaces where lubrication with metal-containing lubricants is not possible or not desired for certain reasons. The ceramic paste prevents electrolytic corrosion and is temperature-resistant up to +1400° C.

The value pack is ideal for maintenance and workshop. The product can be applied with a brush on large surfaces.

Item no.: WS 600-500 · Content: 500 ml · PU: 12 pc
Item no.: WS 600-1000 · Content: 1000 ml · PU: 6 pc



Gebinde:
Tube 130 g

Item no.: WS 640-130 · PU: 15 pc

WS 640 COPPER PASTE TUBE

WS 640 prevents corrosion, seizure and burning. WS 640 protects, separates and lubricates, even in high temperatures. Ideal on engines, pumps, gears, brake systems etc. – Professional quality for industry, trade and automotive.

The perfect carry along pack size. Fits in every assembly and workshop case.

Item no.: WS 640-130 · Content: 130 g · PU: 15 pc



Container type:
brush in lid tub / tub
500/1000 g

Item no.: WS 640 · PU: 12/6 pc

WS 640 COPPER PASTE

WS 640 prevents corrosion, seizure and burning. WS 640 protects, separates and lubricates, even in high temperatures. Ideal on engines, pumps, gears, brake systems etc. – Professional quality for industry, trade and automotive.

The perfect carry along pack size. Fits in every assembly and workshop case.

Item no.: WS 640-500 · Content: 500 g · PU: 12 pc (brush in lid tub)
Item no.: WS 640-1000 · Content: 1000 g · PU: 6 pc (tub)

TYPICAL APPLICATION AREAS

Industry: flange and pipe connections, heat exchanger couplings, valve spindles, pumps, brake systems, axles, gears, mechanical engineering, slide ways, chains, etc.

Any further questions? Please contact us, telephone +49 2389 403010 or write to info@wekem.de

WEKEM SUPERGLUE

WEKEM superglues are 1-component glues on cyanoacrylate bases. Quick hardening, for extremely strong bonding of different materials such as plastic, elastomers, rubber and metal.

WEKEM superglues harden in air humidity, react to pressure and are available in various viscosities. A small drop is usually enough to durably bond the parts.

Polymerisation bonds the materials to each other within seconds. Advantage: no waiting and down times.

WEKEM superglues distinguish themselves by high mechanical firmness and resistance to temperature and chemical influences.



Strong bond



precise dosage



hardens quickly

SUPERGLUE



Container type:
bottle 20/50/500 g

Item no.: WK 20 · PU: 30/20/1 pc

WK 20 SUPERGLUE

WK 20 is quick hardening, very firm, resistant to stress, for EPDM elastomers, rubber and foam rubber and plastic materials that are difficult to glue.

ideal to repair and make O-rings. Fluid and very quick.

Item no.: WK 20-020 · Content: 20 g · PU: 30 pc
Item no.: WK 20-050 · Content: 50 g · PU: 20 pc
Item no.: WK 20-500 · Content: 500 g · PU: 1 pc

SUPERGLUE



Container type:
bottle 20/50/500 g

Item no.: WK 45 · PU: 30/20/1 pc

WK 45 SUPERGLUE

WK 45 is odourless and does not bloom, no smudging on electrical contacts.

Alkoxy based, ideal for application in closed rooms.

Item no.: WK 45-020 · Content: 20 g · PU: 30 pc
Item no.: WK 45-050 · Content: 50 g · PU: 20 pc
Item no.: WK 45-500 · Content: 500 g · PU: 1 pc

SUPERGLUE



Container type:
bottle 20/50/500 g

Item no.: WK 110 · PU: 30/20/1 pc

WK 110 SUPERGLUE

WK 110 is universally applicable, fast, for absorbing and porous materials such as rubber, wood, leather and cork. Really suitable for plastic and metal bonds.

Easy, safe, very firm and precise.

Item no.: WK 110-020 · Content: 20 g · PU: 30 pc
Item no.: WK 110-050 · Content: 50 g · PU: 20 pc
Item no.: WK 110-500 · Content: 500 g · PU: 1 pc

SUPERGLUE



Container type:
bottle 20/50/500 g

Item no.: WK 125 · PU: 30/20/1 pc

WK 125 SUPERGLUE

WK 125 for highest firmness. Best results for glueing of rubber-metal material pairings.

Ethyl based.

Item no.: WK 125-020 · Content: 20 g · PU: 30 pc

Item no.: WK 125-050 · Content: 50 g · PU: 20 pc

Item no.: WK 125-500 · Content: 500 g · PU: 1 pc

SUPERGLUE



Container type:
bottle 20/50/500 g

Item no.: WK 250 · PU: 30/20/1 pc

WK 250 SUPERGLUE

WK 250 is medium-viscous, i.e. there is enough time to re-adjust the glued parts. Best bonding results for rough, absorbent and porous materials.

Safety formula.

Item no.: WK 250-020 · Content: 20 g · PU: 30 pc

Item no.: WK 250-050 · Content: 50 g · PU: 20 pc

Item no.: WK 250-500 · Content: 500 g · PU: 1 pc

SUPERGLUE



Container type:
bottle 20/50/500 g

Item no.: WK 1400 · PU: 30/20/1 pc

WK 1400 SUPERGLUE

WK 1400 hardens slowly, is extremely firm, for metal and hard plastic, excellent gap filling qualities, thick liquid. Ideal for all absorbent materials such as leather, wood, cork etc.

Item no.: WK 1400-020 · Content: 20 g · PU: 30 pc

Item no.: WK 1400-050 · Content: 50 g · PU: 20 pc

Item no.: WK 1400-500 · Content: 500 g · PU: 1 pc

SUPERGLUE



Container type:
bottle 20/50/500 g

Item no.: WK 2500 · PU: 30/20/1 pc

WK 2500 SUPERGLUE

WK 2500 is especially appropriate in high temperatures. Hardening slowly. Extremely resistant to shock and abrasion. High viscosity.

Temperature resistant up to 140°C.

Item no.: WK 2500-020 · Content: 20 g · PU: 30 pc

Item no.: WK 2500-050 · Content: 50 g · PU: 20 pc

Item no.: WK 2500-500 · Content: 500 g · PU: 1 pc

Item no.: WK 2500-020S Pin-in-cap bottle · Content: 20 g · PU: 30 pc

Item no.: WK 2500-050S Pin-in-cap bottle · Content: 50 g · PU: 20 pc

SUPERGLUE



Container type:
Tube 20 g

Item no.: WK GEL-020 · PU: 24 pc

WK-GEL SUPERGLUE-GEL

WK GEL for plastic, rubber and metal, high gap filling ability, highly viscous, can be used on vertical surfaces. Special dosing needle for pin point precise application.

Item no.: WK GEL-020 · Content: 20 g · PU: 24 pc



Container type:
bottle 15 g

Item no.: WK 7-015 · PU: 1 pc

WK 7 PRIMER

The change in the surface structure when using WK 7 results in better cyanoacrylate glueing of plastics, poly olefins, silicone and PTFE. Ideal as a pre-treatment for materials that are difficult to glue or where special adhesion is required.

Item no.: WK 7-015 · Content: 15 g · PU: 1 pc



Container type:
bottle 20 g

Item no.: WK 8-020 · PU: 12 pc

WK 8 SUPERGLUE-REMOVER

To remove fresh glue residue. Test surfaces for compatibility prior to applying the product.

Item no.: WK 8-020 · Content: 20 g · PU: 12 pc



Container type:
Aerosol 200 ml

Item no.: WK 9-200 · PU: 12 pc

WK 9 CA-ACTIVATOR

The modular CA activator accelerates the hardening of all WEKEM cyanoacrylate super glues. Adhesion after 2-3 seconds. Prevents spreading of adhesives. Excess glue is bound by applying WK9.

Item no.: WK 9-200 · Content: 200 ml · PU: 12 pc



Container type:
bottle 30 g

Item no.: WK 10-030 · PU: 12 pc

WK 10 CA-FILLER

Smallest grinded filler particles harden in combination with a superglue to become a solid material. Ideal to replace missing or broken particles by a solid structure.

Item no.: WK 10-030 · Content: 30 g · PU: 12 pc



Container type:
Aerosol 200 ml

Item no.: WK 11-200 · PU: 12 pc

WK 11 AN-ACTIVATOR

New, improved formula to harden anaerobe glues. Ideal on passive materials (e.g. aluminium, zinc-coated surfaces, chrome etc.).

Quick and safe hardening in low temperatures (< 15 °C).

Item no.: WK 11-200 · Content: 200 ml · PU: 12 pc

WEKEM ADHESIVES AND SEALING PRODUCTS: MS POLYMER

WEKEM MS Polymer was developed especially for gluing and sealing of various materials.

Advantages:

- extremely high initial adhesion
- can be lacquered over
- for interior and exterior use in all weather
- quick hardening even in very low temperatures
- not containing isocyanate, silicone or solvents
- excellent adhesion on most, even humid surfaces
- practically odourless, colourfast, resistant to weather and UV light
- permanently elastic and resistant to aging after hardening



elastic bond



strong bond



free of isocyanate or solvents

MS POLYMER



Container type:
Cartridge 290 ml

Item no.: WK 120-300 · PU: 12 pc

WK 120 MULTIFLEX BLACK

WK 120 is a 1-component MS Polymer glue and sealing product. It was developed to bond and seal different materials such as steel, stainless steel, aluminium, zinc, most plastic materials, styropor, wood, parquet flooring, chipboard, gypsum, marble and natural stone. Ideal for bodywork, to seal and protect sheet metal connections against rust and corrosion.

Colour: black.

Item no.: WK 120-300 · Content: 290 ml · PU: 12 pc

MS POLYMER



Container type:
Cartridge 290 ml

Item no.: WK 121-300 · PU: 12 pc

WK 121 MULTIFLEX WHITE

WK 121 is a high-quality isocyanate and silicon-free 1-component glue and sealing product on MS polymer base. To glue most materials, even styropor.

Modern all-round product for the professional tradesman.

Flexible, fast, safe – for inside and outside.
Colour: white

Item no.: WK 121-300 · Content: 290 ml · PU: 12 pc

MS POLYMER



Container type:
Cartridge 290 ml
Tubular bag 600 ml

Item no.: WK 122 · PU: 12/12 pc

WK 122 MULTIFLEX GREY

WK 122 is an extremely adhesive 1-component glue on MS polymer base. It hardens with very little shrinkage and can be lacquered over (wet on wet). The product has excellent longevity and contains no solvents or isocyanates.

Flexible use, permanently elastic, extremely adhesive, wide application range.
Colour: grey

Item no.: WK 122-300 · Content: 290 ml · PU: 12 pc
Item no.: WK 122-600 · Content: 600 ml · PU: 12 pc

MS POLYMER



Container type:
Cartridge 290 ml

Item no.: WK 124-300 · PU: 12 pc

WK 124 MULTIFLEX STRONG

The ideal product for professionals! Extremely high initial adhesive force for nearly all surfaces. Flexible, safe, fast WK 124 is a 1-component MS polymer glue and sealing product. It was developed to bond and seal different materials such as steel, stainless steel, aluminium, zinc, most plastic materials, styropor, wood, parquet flooring, chipboard, gypsum, marble and natural stone. Ideal for bodywork, to seal and protect sheet metal connections against rust and corrosion.

Colour: white.

Item no.: WK 124-300 · Content: 290 ml · PU: 12 pc



Container type:
Cartridge 290 ml

Item no.: WK 126-300 · PU: 12 pc

WK 126 MULTIFLEX CLEAR

For transparent bonds in visible areas.

WK 126 was developed to bond and seal different materials such as steel, stainless steel, aluminium, zinc, most plastic materials, styropor, wood, parquet flooring, chipboard, gypsum, marble and natural stone. Is adhesive in the most adverse conditions, even on wet surfaces. Wet on wet, can be lacquered over.

Colour: transparent.

Item no.: WK 126-300 · Content: 290 ml · PU: 12 pc



Container type:
Cartridge 290 ml

Item no.: WS 118-300 · PU: 12 pc

WS 118 ULTRA CLEAR

For visible glass and mirror bonding.

WS 118 can be painted over with all water-based paints. For inside and outside applications – in all weather. Quick hardening even in low temperatures. No bubble formation on porous surfaces. Does not contain any solvents, isocyanates or silicone. Excellent adhesion on most, even wet surfaces. Can be applied in most cases without having to use primers.

APPLICATION: Especially developed to bond and seal different materials.

Item no.: WS 118-300 · Content: 290 ml · PU: 12 pc



Container type:
Cartridge 290 ml

Item no.: WS 128-300 · PU: 12 pc

WS 128 ULTRA BOND BLACK

The universal glue for outside and in building construction.

For mortises, expansion joints, sheet metal assemblies, plumbing. WS 128 can be used both inside and outside – in all weather. Quick hardening even in low temperatures. Does not contain any solvents, isocyanates or silicone. Excellent adhesion on most, even wet surfaces. High initial adhesive force and quick hardening. Nearly odourless, colourfast, resistant to weather and UV light. Permanently elastic and resistant to aging after hardening.

Item no.: WK 128-300 · Content: 290 ml · PU: 12 pc

TYPICAL APPLICATION AREAS

Metal construction, packaging industry, sound proofing and insulation, air conditioning, body shops, container manufacturing and maintenance, rail and HGV industry, yachting, energy, electricity and lighting industry and all those areas where silicon containing products are unsuitable or unwanted.

Any further questions? Please contact us, telephone +49 2389 403010 or write to info@wekem.de

ADHESIVES AND SEALING PRODUCTS: POLYURETHANE

WEKEM Polyurethane adhesives are appropriate for professional bonding and sealing techniques. The well-balanced formulation provides safe bonding and constructional bonds in the automotive, shipbuilding, metal and container construction industries.

For sealing both in- and outdoors. Quick and safe handling. Ideal for professional use in crafts, industry and the metal trade.



Body work

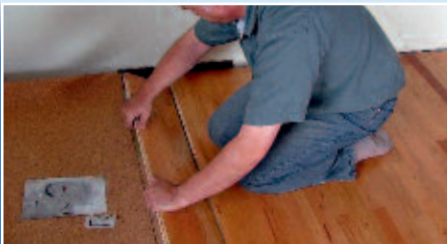


windows



wood and metal

POLYURETHANE



Container type:
Cartridge 310 ml

Item no.: WK 38-300 · PU: 12 pc

WK 38 PU BOND FIX

WK 38 can be used on most surfaces, is resistant to weather and age. Odourless and shrink-free hardening, can be painted over, universally applicable, for nearly all applications inside and out. For MDF, wood, chip-board, wooden panels, fibre panels and gypsum panels, ceramic, metals, hard foams, styropor, etc..

Ideal to glue stair treads, baseboards, corner joints, insulating boards, cable and hose clips etc.

Item no.: WK 38-300 · Content: 310 ml · PU: 12 pc · colour: beige

POLYURETHANE



Container type:
Cartridge 310 ml

Item no.: WK 50, WK 51, WK 52 · PU: 12 pc

WK 50 / WK 51 / WK 52 PU GLUE

Highly efficient PU glue with medium shore hardness to glue, attach and seal metal surfaces, stone, ceramic or concrete. Weather-resistant, to be use in- and outdoors. For application in the automotive sector, metal and container construction as well as bodywork glue. Quick, safe, with strong adhesive force. For repair and maintenance.

Item no.: WK 50-300 · Content: 310 ml · PU: 12 pc · colour: black

Item no.: WK 51-300 · Content: 310 ml · PU: 12 pc · colour: white

Item no.: WK 52-300 · Content: 310 ml · PU: 12 pc · colour: grey

POLYURETHANE



Container type:
Cartridge 50 ml

Item no.: WK 55-050 · PU: 12 pc

WK 55 2-C POLYURETHANE SUPER GLUE

WK 55 is a 2-component PU superglue that hardens extremely fast, for bonding and mending. To be used in industry, trade and the automotive sector. Resistant to water, oils, fuel, solvents, acids and lye. Mixing ratio: 1:1. Fixation time: 3-5 minutes. After about 20-30 minutes post-processing is possible by grinding, drilling, thread cutting. Can be lacquered over after about 60 minutes. To glue and refurbish plastic wheel trims, spoilers, wheel arches, bumper brackets, decorative strips, instrument boards, grab handles, casing and many more.

Item no.: WK 55-050 · Content: 50 ml · PU: 12 pc

POLYURETHANE



Container type:
Cartridge 310 ml

Item no.: WS 131-300 · PU: 12 pc

WK 131 1 C GLASS BOND

1-component Polyurethane Window Glue for directly glued car windows. Excellent quality for OEM application and suitable for cars equipped with airbags. Quick hardening. Advantages: no long down times required.

Colour: black.

Item no.: WK 131-300 · Content: 310 ml · PU: 12 pc



Container type:
Cartridge 310 ml

Item no.: WS 135-300 · PU: 1 pc

WK 135 WINDOW REPAIR SET

Contains: window glue (WK 131), primer, cleaner, cleaning cloth, cartridge needle, instructions.

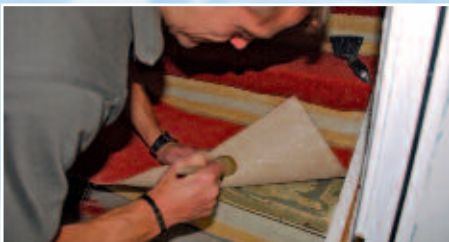
Colour: black

Impeccable bonding is only guaranteed if the components included in this set are used.

Item no.: WK 135-300 · Content 310 ml · PU: 1pc

CONTACTADHESIVE

1-C adhesives for surface bonding. Apply adhesive to both surfaces. After the glue has been applied let the glue dry to form a skin. Now position both parts together and keep them pressed together.



Container type:
Tub 750 ml

Item no.: WS 650-750 · PU: 1 pc

WK 650 UNIVERSAL GLUE

Universal contact glue formulated from synthetic rubber, epoxy resin and solvents. To glue coated plastic materials (Formica, Perstorp, Duropal, Resopal, etc.), cardboard, rubber, foams, leather, linoleum, felt, concrete, stone and metal.

Value pack for the professional tradesman.
Simply apply the product with the brush.

Item no.: WK 650-750 · Content 750 ml · PU: 1 pc

APPLICATION GUIDE LINES

Prior to applying the adhesive it is of the utmost importance to prepare the substrate. In general the cleaner the surfaces are the better the bond.

We recommend to clean the surfaces with WS2000.

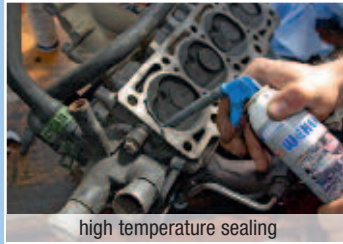
Any further questions? Please contact us, telephone +49 2389 403010 or write to info@wekem.de

ADHESIVES AND SEALING PRODUCTS: HT SILICONE

WEKEM HT (high temperature) silicones are special 1-component adhesives and sealing products characterised by a high degree of stability and firmness. The innovative combination of agents provides safe bonding and sealing in high temperature ranges and under normal conditions. They can be applied via an applicator or directly from the cartridge.



For oil tanks and sumps



high temperature sealing



technical sealants

HT SILICONE



Container type:
Cartridge 200 ml

Item no.: WK 138-200 · PU: 12 pc

WK 138 HT TRANSPARENT PRESSURIZED PACK

WK 138 is a weather-resistant, permanently elastic HT silicone with extreme adhesion on steel, aluminium, ceramic, glass, plastic, wood and other materials. Ideal to seal engine casings, gears, valves and valve covers, oil sumps, water pumps, heating systems, industrial ovens and tiled stoves, exhaust gas systems and air-conditioning systems.

colour: transparent

Item no.: WK 138-200 · Content: 200 ml · PU: 12 pc

HT SILICONE



Container type:
Cartridge 80 ml

Item no.: WK 148-080 · PU: 10 pc

WK 148 HT-SILICONE BLACK

WK 148 is a weather-resistant, permanently elastic HT silicone with extreme adhesion on steel, aluminium, ceramic, glass, plastic, wood and other materials. Ideal to seal engine casings, gears, valves and valve covers, oil sumps, water pumps, heating systems, industrial ovens and tiled stoves, exhaust gas systems and air-conditioning systems.

colour: black

Item no.: WK 148-080 · Content: 80 ml · PU: 10 pc

HT SILICONE



Container type:
Cartridge 200 ml

Item no.: WK 148-200 · PU: 12 pc

WK 148 HT-SILICONE BLACK PRESSURIZED PACK

WK 148 is a weather-resistant, permanently elastic HT silicone with extreme adhesion on steel, aluminium, ceramic, glass, plastic, wood and other materials. Ideal to seal engine casings, gears, valves and valve covers, oil sumps, water pumps, heating systems, industrial ovens and tiled stoves, exhaust gas systems, air-conditioning systems.

colour: black

Item no.: WK 148-200 · Content: 200 ml · PU: 12 pc

HT SILICONE

HT SILICONE



Container type:
Cartridge 310 ml

Item no.: WK 148-300 · PU: 20 pc

WK 148 HT-SILICONE BLACK

WK 148 was especially developed for applications in high temperatures, it replaces most firm material seals, is ideal to be used on engines, gears, pumps and parts that are operated in extreme temperatures.

Temperature-resistant between -50°C and +240°C.

Colour: black.

Item no.: WK 148-300 · Content: 310 ml · PU: 20 pc

HT SILICONE



Container type:
Cartridge 80 ml

Item no.: WK 158-080 · PU: 10 pc

WK 158 HT-SILICONE RED

Red permanently elastic high-temperature silicone for quick application on the spot. In most cases, the handy cartridge filling is sufficient for one application, if higher quantities are required, we can provide bigger packs. Can also be used as permanent seal.

Temperature-resistant between -50°C and +300°C.

Colour: red

Item no.: WK 158-080 · Content: 80 ml · PU: 10 pc

HT SILICONE



Container type:
Cartridge 200 ml

Item no.: WK 158-200 · PU: 12 pc

WK 158 HT-SILICONE RED PRESSURIZED PACK

WK 158 in the special press pack cartridge. Easy application without additional application tool. By slightly pushing the lever, equal application is possible even in areas that are difficult to access. The product adheres to aluminium, steel, glass, glass fiber, ceramic and wood. Tried and tested as engine and housing sealant!

Temperature-resistant between -50°C and +300°C.

Colour: red

Item no.: WK 158-200 · Content: 200 ml · PU: 12 pc

HT SILICONE



Container type:
Cartridge 300 ml

Item no.: WK 158-300 · PU: 12 pc

WK 158 HT-SILICONE RED

WK 158 is a weather-resistant, permanently elastic HT silicone with extreme adhesion on steel, aluminium, ceramic, glass, plastic, wood and other materials. Ideal to seal engine casings, gears, valves and valve covers, oil sumps, water pumps, heating systems, industrial ovens and tiled stoves, exhaust gas lines, air-conditioning systems. Dosage using WEKEM application tools.

Temperature-resistant between -50°C and +300°C.

Colour: red

Item no.: WK 158-300 · Content: 300 ml · PU: 12 pc

WEKEM Silicones are recommended for a permanent longtime elastic bond. The quick bonding makes it easy to use the products in production, maintenance, repair and construction. Suitable for quick assembly and fast repairs.

Any further questions? Please contact us, telephone +49 2389 403010 or write to info@wekem.de

ADHESIVES AND SEALING PRODUCTS: 2-COMPONENT ADHESIVES

Professional 2-component adhesives for extremely firm bonds. Resistant to chemical and mechanical influences. For glueing, repairing, filling and bonding. Can be applied easily via two-chamber system or attached mixing nozzle and dosing syringe WS14 and mixers WS16 or WS17.

You can choose from various types of adhesives for your special applications. They differ in material and hardening times. We provide products that harden quickly or slowly.



Housing repairs



strong quick bonds



technical specialist bonds

2-COMPONENT ADHESIVES



Container type:
Putty 115/56 g

Item no.: WS 360 · PU: 12/24 pc

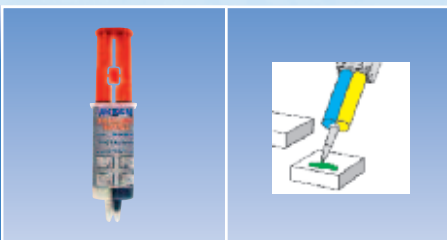
WS 360 COLD METAL

2-Component Epoxy Metal. This steel-filled putty has an extremely high adhesive force. It hardens quickly and can also be applied to vertical surfaces. WS 360 is best suited to seal and fill tears, holes and leaks on machine parts, tanks, containers, pumps, housings etc. – This special repair mass is widely used in industry, trade and technology.

Processing temperature: max. +300°C.

Item no.: WS 360-056 · Content: 56 g · PU: 24 pc
Item no.: WS 360-120 · Content: 115 g · PU: 12 pc

2-COMPONENT ADHESIVES




Container type:
Cartridge 24 ml
Item no.: WS 362-025
PU: 20/6 pc

Container type:
Cartridge 24/50 ml
Item no.: WK 5
PU: 20/6/6 pc

WS 362 LIQUID METAL

Epoxy based, quick hardening. To repair steel and cast metal parts. Fills tears, holes and cavities. The hardened glue can be processed mechanically after a short time.

Approved by  Tox no. 176 773
Item no.: WS 362-025 · Content: 24 ml · PU: 6 pc / 20 pc (Display)

WK 5 5 MINUTES EPOXY

For extremely firm connections. To glue metals, ceramic, wood etc. – Quick hardening.

Item no.: WK 5-025 · Content: 24 ml · PU: 6 pc / 20 pc (Display)
Item no.: WK 5-050 · Content: 50 ml · PU: 6 pc

MMA



Container type:
Cartridge 28/56 g

Item no.: WS 364 · PU: 20/6 pc

WS 364 MULTI-PLAST

WS 364 is a 2-component-methyl acrylate-highly efficient glue to bond different materials. The bond is resistant to shock and abrasion and can be processed as you like. WS 364 is resistant to solvents and humidity. Indispensable for repair and maintenance crews.

APPLICATION: aluminium, steel, stainless steel, metals, plastic, thermo-plasts, acrylic (PMMA), PVC, GFK, PC, PET, PBT, PU, epoxies and compound materials etc.. Plastics will appear to be welded.

Item no.: WS 364-025 · Content: 25 ml · PU: 6 pc / 20 pc (Display)
Item no.: WS 364-050 · Content: 50 ml · PU: 6 pc

2-COMPONENT ADHESIVES

TECHNICAL ACCESSORIES

We offer you a comprehensive selection of technical accessories completing and rounding off the WEKEM product range. WEKEM accessories provide highly functional and safe handling. Tried and tested thousands of times.



Individual



innovative



industry oriented



Item no.: WZ 48 · PU: 15 Rollen

WZ 48 VULCANIZING TAPE

Vulcanizing insulating and repair tape to be used in industry and the automotive sector. Protects metals against corrosion. Damage on electrical cables and other repaired parts can be permanently protected from humidity and oxidation. Smaller repairs can be carried out immediately. Should be available in every toolkit!

Item no.: WZ 48 · PU: 15 pc (5m-reel)



Item no.: WS 14 · PU: 1 pc

WS 14 APPLICATOR GUN PLASTIC

Applicator gun made of solid plastic. For all WEKEM 2K epoxy glues that are processed via dosing needle or mixer. Advantage: applicator pistons automatically refrain after the dosing process, so there is no posterior dripping of the glue.

Item no.: WS 14 · PU: 1 pc



Item no.: WS 15 · PU: 1 pc

WS 15 APPLICATOR GUN METAL

WS 15 applicator gun made of metal for highly viscous 2-C methacrylate and 2-C PU glues. Advantage: the solid make of this version produces an increased appliance of pressure, so thick and highly viscous products are easily dispensed.

Other colours are available upon request in "Private Label"!

Item no.: WS 15 · PU: 1 pc



Item no.: WS 9 · PU: 1 pc

WS 9 POWER DISPENSER EPDM

WS 9 is a pressure-pump-dispenser for solvent-containing products such as WS 1000, WS 2000 and WS 2200. Simply fill the product, create pressure by pumping. Product can be dispensed via an adjustable nozzle.

A separate seal kit is available for this model!

Item no.: WS 9 · Content: 1 l · PU: 1 pc



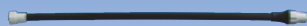
Item no.: WS 10 · PU: 1 pc

WS 10 POWER DISPENSER VITON

Technically high-quality dispenser with Viton seal for spraying liquid agents and cleaners. Especially suitable for WS 2500, WS 2800 and WS 2900. Easy handling. Fill with product, pump up container.

A separate seal kit is available for this model!

Item no.: WS 10 · Content: 1 l · PU: 1 pc



Item no.: WS 11 · PU: 1 pc

WS 11 DISPENSER

Professional dispenser attachment for power dispensers WS 9 and WS 10. By fitting the extension, the product can be applied to areas that are difficult to access.

Item no.: WS 11 · PU: 1 pc

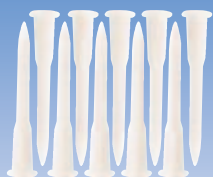


Item no.: WS 12 · PU: 1 pc

WS 12 HANDHELD DISPENSER

Refillable dispenser for liquid media. Ideal for small amounts. The spray power can be adjusted. Do not use for aggressive media. Recommended for WS 2500, WS 2800 and WS 2900.

Item no.: WS 12 · Content: 500 ml · PU: 1 pc



Item no.: WS 16 · PU: 10 pc

WS 16 STATIC MIXER SET

Dispensing mixer for 2-component cartridges. Recommended for WS 364 WK 5 and WK 55. The amount of glue is variably dispensed by shortening the mixer needle.

Fits on all ordinary 2-component cartridges of various manufacturers with bayonet fitting. Please take into account the recommended mixing ratios.

Item no.: WS 16 · PU: 10 pc

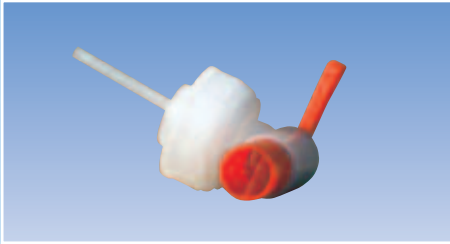


Item no.: WS 17 · PU: 10 pc

WS 17 QUADRO MIXER

WK 17 is a Quattro mixing nozzle for 2-component glues. The special spiral technique guarantees for equal and excellent mixing of the glue components. Recommended for WS 364. The honeycomb structure is designed in such a way that the glue is quickly mixed four times. This longer way of mixing improves product homogeneity.

Item-no.: WS 17 · PU: 10 pc



Item no.: WZ 2 · PU: 1 pc

WZ 2 FLUID DISPENSER

WZ 2 is a universal outlet cock for all WEKEM 5l plastic containers. Simply screw onto the container. Re-usable.

Item no.: WZ 2 · PU: 1 pc



Item no.: WZ 3 · PU: 1 pc0

WZ 3 FLUID DISPENSER METAL

WZ 3 is a special outlet cock in heavy metal for all WEKEM bulk products in barrels. Re-usable.

Item no.: WZ 3 · PU: 1 pc



Item no.: GT · PU: 10 Rollen

GT GOLDEN TAPE

Extremely dense, highly efficient, PTFE sealing tape. GT is used to seal pipe connections and screw connections, It is resistant to aggressive media such as benzenes, oils, propane, petroleum, kerosene and natural gas (pressure up to <300 psig).

Item no.: GT · PU: 10 Rollen

Do you have recommendations? Improvements.
Assist us to improve our services.

Any further questions? Please contact us , telephone +49 2389 403010 or write to info@wekem.de

WE ARE THERE TO SERVE YOU!

WEKEM is a reliable partner for you. Well assorted product range, cost reduction via logistical services and tailor made customer solutions form part of the long term result.

Motivated personnel offers technical support and customer service.

We would be really happy if you put us to the test



ORGANISATION - ADMINISTRATION

Ms. Kemler is your contact for all in-house matters, personnel, trade-fairs and administration. She is a vocational training specialist qualified by the chamber of commerce.

Astrid Kemler
Phone: +49 23 89 / 40 30 10
E-Mail: a.kemler@wekem.de



ACCEPTANCE OF ORDERS

Ms. Wilzcek is your contact for inquiries, orders, quotations and data sheets. She will ensure that your orders are processed without a problem.

Andrea Wilzcek
Phone: +49 23 89 / 40 30 10
E-Mail: a.wilzcek@wekem.de



ORDER PROCESSING

Ms. Beckhaus processes your orders. She is our accounting specialist

Margareta Beckhaus
Phone: +49 23 89 / 40 30 10
E-Mail: m.beckhaus@wekem.de



ORDER PROCESSING

Mr. Pieninck is handling technical sales support. He is also our logistical manager and he will ensure that your goods are dispatched without a problem.

Karl Pieninck
Phone: +49 23 89 / 40 30 10
E-Mail: k.pieninck@wekem.de

WHERE DO YOU FIND US...

On our website www.wekem.de you will find

- interactive product recommendation guide
- Safety data sheets
- technical data sheets
- certificates
- news
- information bulletins
- new product launches
- vacant positions (jobs)
- and much more, have a look

The screenshot shows the WEKEM website interface. At the top, there's a navigation bar with 'Produkte', 'News', 'Datenblätter', 'Zertifikate', 'Jobs', 'AGBs', 'Firmenporträt', and 'Impressum'. The main content area is titled 'Produktsortiment' and features a large image of various industrial products like sprays, adhesives, and cleaning agents. Below this, there's an 'Interaktiver Produktratgeber' section with a list of application areas: 'Dichten von Flächen und Flanschen', 'Fügen von Wellenverbindungen und Naben', 'Abdichten von Gewinden', 'Sichern von Schrauben und Gewinden', and 'Kleben mit Sekundenklebern'. The left sidebar lists categories like 'Technische Sprays', 'Technische Reinigungsprodukte', 'Technische Klebstoffe', and 'LOKEAL-Produkte'.

WEKEM®

WEKEM GmbH
Mühlenfeld 37 - 39 · 59368 Werne
Phone: +49 23 89 - 40 30 10 · Fax: +49 23 89 - 40 30 111
E-Mail: info@wekem.de · www.wekem.de

